

JTWWwatch is a next generation of PC-based DVR system. For so long, PC-based DVR systems have been developed with Mpeg4 based compression, which while the file sizes are small, Mpeg4 is not of same Video quality as H.264. Mpeg4 has major issues when objects move in front of cameras such as people walking or cars. But H.264 does not have this problem; this is where Mpeg4 has a major video interlace issues. Mpeg4 compression also tends to be very pixilated on full screen playback. JTWWwatch DVR cards take all the pressure of CPU as it uses hardware and not software to compress image and that also increases image quality as hardware compression offers full D1 704 x 576 resolutions (not Mpeg4 based 640 x 480 with video interlacing when images move). Below are images showing the difference in video quality when moving object appear in front of H.264 Compression. No video interlacing appears unlike MPEG4!



## Features

- Support Max 64 channels video input and 64 channel audio inputs.
- Each channel can be compressed independently in 25fps (PAL) or 30fps (NTSC).
- Smart Search (Search in user defined Zones to save time looking for relevant video).
- Real time Recording on every channel!
- DSP Hardware Compression Chip.
- Support dynamic IP address.
- Synchronized video and audio.
- 704 x 480 Full D1 H.264 hardware-compressions.
- Program can be minimized to allow DVR to be used for multi tasking.
- Digital watermark authentication.
- High recording and display resolution. High image quality (FULL D1 Hardware Compression).
- Motion detection recording. Schedule recording. Sensor recording.
- Pre alarm and post alarm recording.
- Multi-channel playback.
- E-Map pop-up on motion or alarm activation.
- No interlacing of image (Like Software compression DVR).
- Ability to playback DVR server via PC or TV Monitor

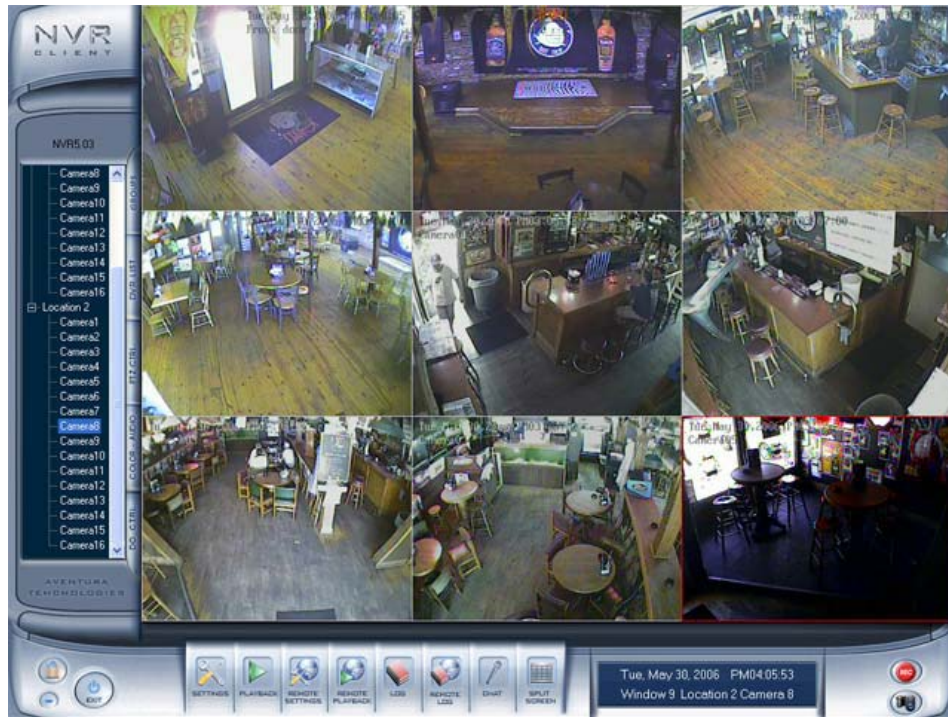
# DVR SEARCH



DVR SETTING



DVR SEARCH



DVR CLIENT



WEB BROWSER